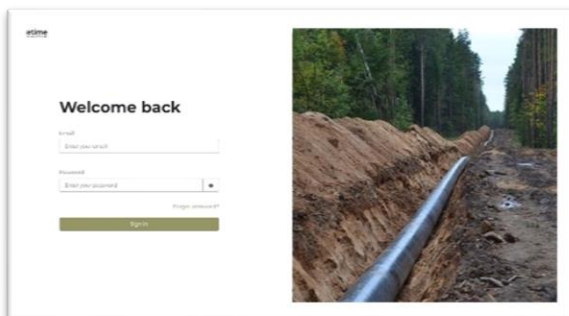


## Parvamoti: Basetime's Measurement Management System

Parvamoti serves as the Measurement Management System for Basetime. In essence, it is a system designed to autonomously oversee Locator One devices, assess system conditions (health), establish projects, and configure Locator One devices independently. Ultimately, the system encompasses multiple dashboards for visually presenting and downloading data in a user-friendly manner. Parvamoti is tailored for contractors, construction companies, earth-moving firms, land surveyors, and geotechnical specialists who prioritize direct access to their data.



### Parvamoti - description

Parvamoti empowers you to thoroughly manage your Locator One devices, initiate and oversee projects. Various user types have been established in Parvamoti, each with distinct rights to access specific sections of the system and modify settings. User types range from dealer managers and company managers to project viewers, and a dedicated overview outlines these rights.

When managing Locator One devices, key functionalities include assigning specific devices to projects, monitoring device health (voltage), and accessing various overviews such as device locations. In project settings, you can configure details about the reference station and objects to

## “ Parvamoti

*With Parvamoti, I have complete control over the measurements made with the Locator One. Configuring it from behind the desk and instant insight into the data.*

*This is what I was waiting for!*

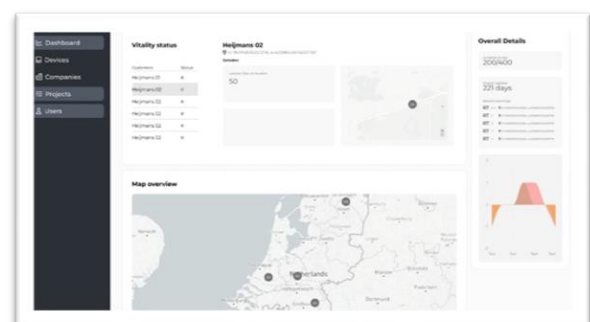
- Jolanda de Jong

(Project manager Geodesy,  
Coenradie)

be monitored. The dashboards provide insights into the measurement results, allowing for convenient downloads. Additionally, the API option remains available, facilitating direct data transmission to your own management system.

### In control from behind your desk

- Setting up a project
- Configure Locator Ones (number of measurements/day)
- Assign Locator Ones to settlement rods
- Assigning users
- Reports and insight into disruptions to settlement rods
- Notifications and insight into the "health" of Locator Ones
- Optional: dashboards





Locator One



Settlement  
Monitoring



Parvamoti

## Parvamoti – functions

Basetime collaborates with global dealers for the sale or rental of Locator One devices. Following the purchase, Basetime registers the acquired Locator One devices, complete with QR codes, in Parvamoti, and allocates them to the corresponding dealer or company. This marks the initiation of the dealer's or company manager's engagement with the devices. Locator One devices become visible through the QR code in the *Devices* tab, allowing the dealer or company manager to associate their own management codes with the device QR codes. The *Dashboard/Health* tab provides information on device location, temperature, and voltage.

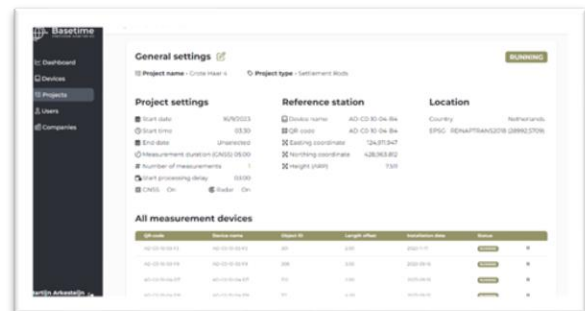
Now, let's dive into the operational phase! The process kicks off with the creation of different users in the *Users* tab. Here, the dealer manager and/or the company manager can generate new users and assign specific roles to each user.

Once the user setup is complete, the project creation takes center stage in the *Projects* tab. This pivotal step involves establishing the administrative details of the project, selecting the project type (such as settlement rods or 3D object monitoring), defining the start and end times, and configuring the reference station. This includes inputting measured coordinates, selecting the appropriate coordinate system and geoid (elevation model), and the flexibility to work in a local system.

After this, the Locator One devices are linked to the project. This is effortlessly done through the import of an Excel sheet. Once all configurations are set, the project is saved and initiated. The configuration details are then dispatched to the Locator One devices through an Over The Air Update.

Aligned with the specified start and end dates, Locator Ones commence data collection and transmit it to the Basetime cloud environment. Here, data undergoes testing, validation, and calculation of coordinates and other metadata. The processed data is then presented in dedicated dashboards.

Navigate to the *Dashboards* tab, select either *Settlement Rods* or *Object Monitoring*, and access the data for viewing and downloading. If utilizing an API, the data is seamlessly forwarded to the designated management system of your preference.



## Added value

With Parvamoti, reliance on external entities is eliminated. This ensures swift and direct access to device status and location, the flexibility to adjust measurement times and frequencies at your convenience, and comprehensive insights into measured data through the user-friendly dashboards. All of this is seamlessly integrated into a single, unified system, providing an efficient and self-sufficient solution.

## Further information

Would you like more information about Parvamoti? Send an email to:

[sales@basetime.nl](mailto:sales@basetime.nl)

