

Pay-Per-Measurement (PPM)

Cost-effective and flexible

No Active Devices? No Payment!

Why Pay-Per-Measurement (PPM)?

With Basetime's new Pay-Per-Measurement (PPM) system, you only pay for the data your active devices generate—no more yearly fees for inactive equipment. Designed to be both cost-effective and flexible. You only pay for what you need, when you need it.

With Basetime's PPM system, you'll enjoy:

- Cost savings by only paying for active devices
- A fair credit-based model: purchase credits, use them as needed
- Non-expiring credits for greater flexibility
- No hidden fees or surprise charges
- An ideal solution for rental projects
- Full support included when you purchase a package

How Does It Work?

Every "measurement" in our system includes:

- Data collection
- Transmission
- Processing & calculations
- Data storage
- Presentation on our platform

With PPM, you only pay for the measurements you actually make. It's that simple.

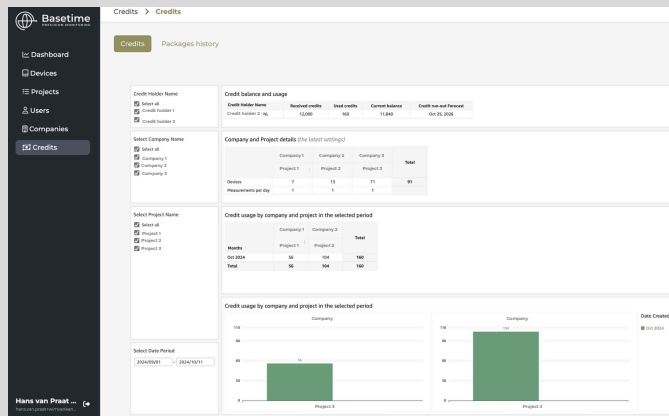
To Measure, To Know

At Basetime, we believe that flexibility is key to better geodetic data management. Our PPM system puts you in control, giving you the tools to measure smarter. Stay tuned for more updates and get ready for a more efficient future with Basetime!

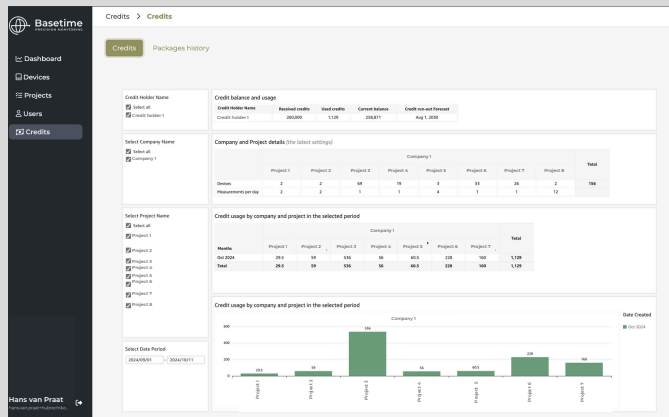
Get in touch!

Ready to manage your geodetic data more efficiently? Contact us today to learn how PPM can streamline your projects and save you money.

monitor credit usage per project



suitable for small and large projects



For more info contact us or visit www.basetime.nl/en/



Lichtschip 75A,
3991 CP Houten
The Netherlands

+31 30 249 6 149
info@basetime.nl

CoC registration: 84189681

Basetime
PRECISION MONITORING