

CRMALDCBS1X16



GPS Compact Rack Mounted Amplified 1X16 Splitter Technical Product Data

Features

- Excellent Amplitude Balance
 - Less than 1 dB variation between ports.
- Flat Group Delay
 - Less than 1ns variation between L1 and L2.
- High Output Gain
 - 14.0 dB gain is typical across all operating frequencies in the standard configuration.
- Wide Accepted Frequency Range
 - Accepts signals from the entire L-Band, covering all major GNSS constellations.
- Efficiently Blocked Ports
 - Uses 200Ω resistors to prevent antenna alarm faults from connected devices.
- LED Power Light
- -48VDC Power Option Available
- Durable Rugged Standard 2U Chassis



Description

This **Compact Rack Mounted Amplified Loaded DC Blocked Splitter 1X16 (CRMALDCBS1X16)** is an active one input, sixteen output RF splitter that splits signals from 1.1 GHz to 1.7 GHz and has a formfactor which will fit in a server rack. This equipment is designed to amplify and split signals within the L-band to provide multiple devices with the signal from a single antenna. In the standard configuration, the J1 port will pass DC voltage from a connected device and pass this power to the antenna or other devices upline from the splitter through the antenna port. The other ports (J2-J16) are DC blocked and loaded with 200Ω resistors to simulate antenna current draw which prevents antenna alarm faults. Custom gain configuration, DC configuration, and connector configuration are available upon request. With the larger form factor, we are able to add additional equipment to meet requirements not included in the default device at an additional cost and lead time.

Use Cases

- Splitting and amplifying a roof antenna signal between 16 GPS/GLONASS/GNSS receivers.
- Splitting and amplifying an antenna signal to 16 passive antennas to re-radiate a large facility.
- Usable as a small part of a larger signal distribution network.

CRMALDCBS1X16



Electrical Specifications, TA=25°C

General Specification

Parameter	Notes	Min	Typ	Max	Unit
Frequency Range	Covers all major GNSS constellations.	1.1		1.7	GHz
Characteristic Impedance	Unused ports should be terminated with 50Ω loads.		50		Ω
Req. DC Input V.	Operating voltage range for non-networked units.	3.3		15	VDC
Current Draw	Typical current consumption.		50		mA

GPS L1 & L2 RF Specification⁽¹⁾

Parameter	Notes	Min	Typ	Max	Unit
Gain	The relative increase in signal power provided by the amplifier.	13.0	14.0	15.0	dB
High Isolated Gain	The relative increase in signal power provided by the amplifier when the device is high isolated.	-2.0	0.0	2.0	dB
Input SWR	Input Standing Wave Ratio: S11		1.5:1	2.0:1	-
Output SWR	Output Standing Wave Ratio: S22		1.5:1	2.0:1	-
Gain Flatness	The difference in loss or gain between the L1 and L2 frequencies.		0.5	1.0	dB
Amplitude Balance	The difference in gain or loss between each output port.			1.0	dB
Isolation	The amount of attenuation between two output ports.	L1:17 L2:12		L1:76 L2:71	dB
Group delay flatness	The difference in signal delay between the L1 and L2 frequencies.		1		ns
Input P1dB	The 1dB compression point.		-23.5		dBm

(1): Performance is slightly reduced around GPS L5. If working on sensitive L5 applications, please request performance data.

External Power Options (Networked Option)

Source Voltage Options	Voltage Input	Style
	110VAC	Transformer (ITA Type A Wall Mount)
	220VAC	Transformer (ITA Type C Wall Mount)
	240VAC (United Kingdom)	Transformer (ITA Type G Wall Mount)
	Customer Supplied DC 9-32 VDC	MIL-DTL-5015 10SL DC Connector (Includes Mate)
Output Voltage Options ⁽¹⁾	DC Voltage Out	Max Current out For Corresponding Vout
	3.3 V	110mA
	5V	130mA
	9V	140mA
	12V	180mA
	15V	220mA
	Custom	Custom
Standard DC Configuration without External Power Option		
J1/Output 1 Pass DC, J2-J16/Output 2-16 Block DC, Input Pass DC		
Standard DC Configuration with any External Power Option (AC/DC or Military DC)		
All Outputs DC Blocked with 200Ω load standard		
Any port can be custom selected to Pass or Block DC		
Connector Options	Connector Style	Charge
	Type N-female	No Charge
	Type SMA-female	No Charge
	Type TNC-female	No Charge
	Type BNC-female	No Charge
	Other	Contact GPS Networking

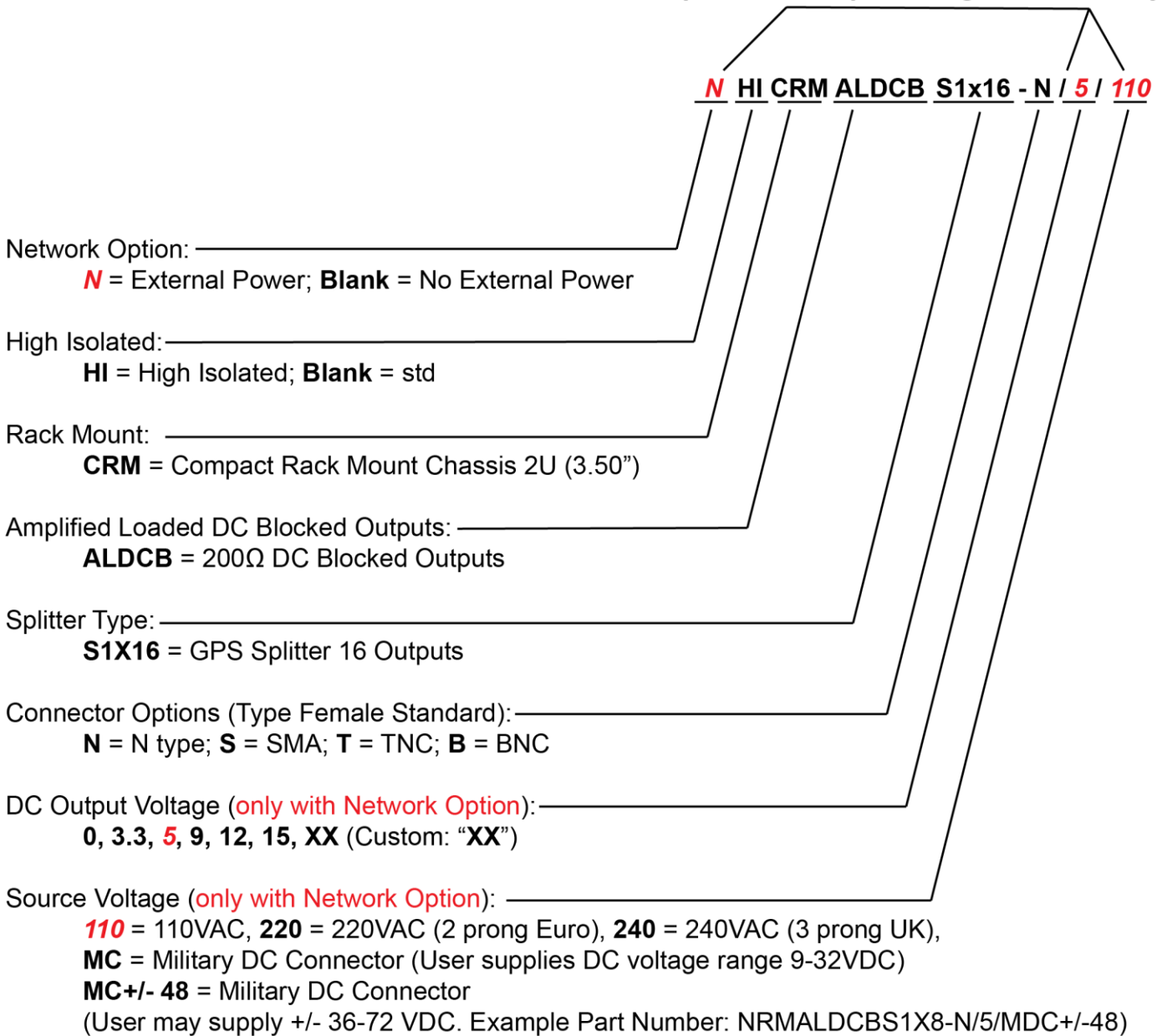
CRMALDCBS1X16

(1) With Network Option, any RF port (input or output) can be specified to Pass DC or Block DC



Part Number Configuration

**Network Option (External Power Supply)
Requires 'N', Output Voltage and Power Type**



(Military DC Mating Connector is included standard with the MC power option).

When no external power supply option (AC or DC) is selected, Output 1/J1 is Pass DC Standard.
When external power supply option is selected, all outputs are DC blocked standard.

Contact GPS Networking Technical Support at 1-800-463-3063 or salestech@gpsnetworking.com for any questions regarding non-standard configurations and corresponding part numbers.

CRMALDCBS1X16

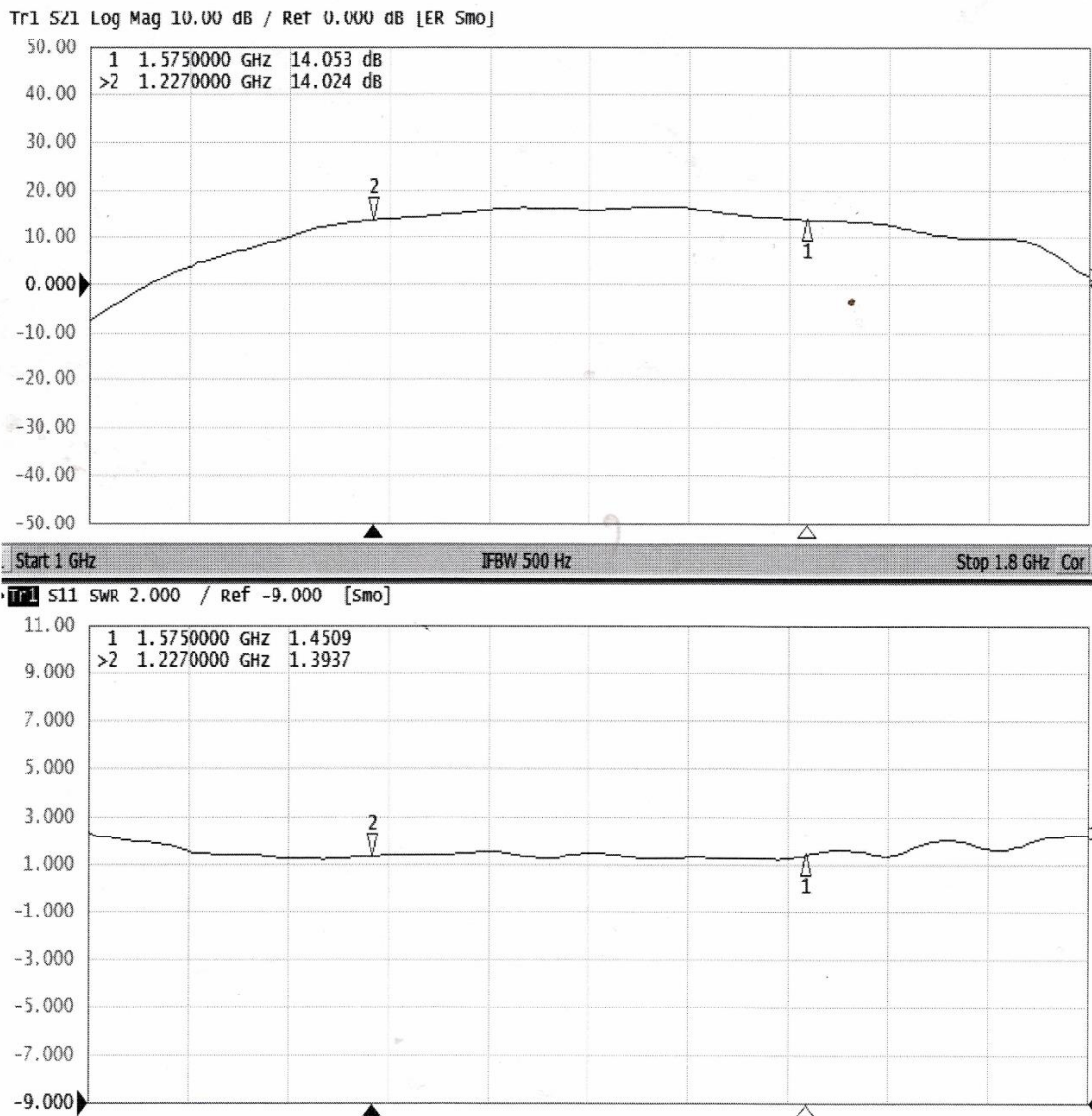


Performance

CRMALDCBS1X16 (Standard Gain)

Each CRMALDCBS1X16 ships with a test sheet that verifies critical performance characteristics, such as gain, input VSWR, and amplitude balance; a typical VNA test sheet is shown below.

Test Data



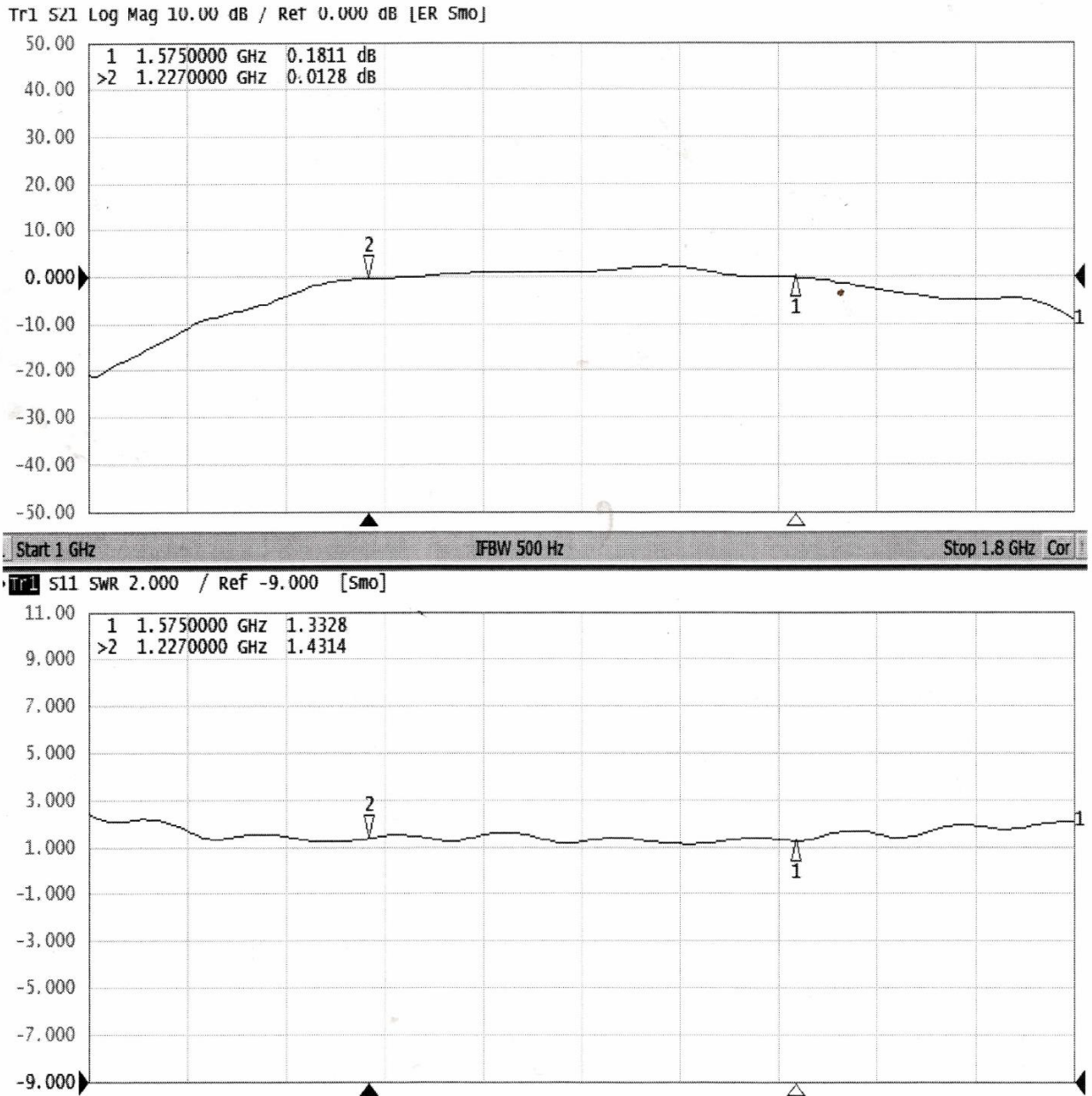
CRMALDCBS1X16



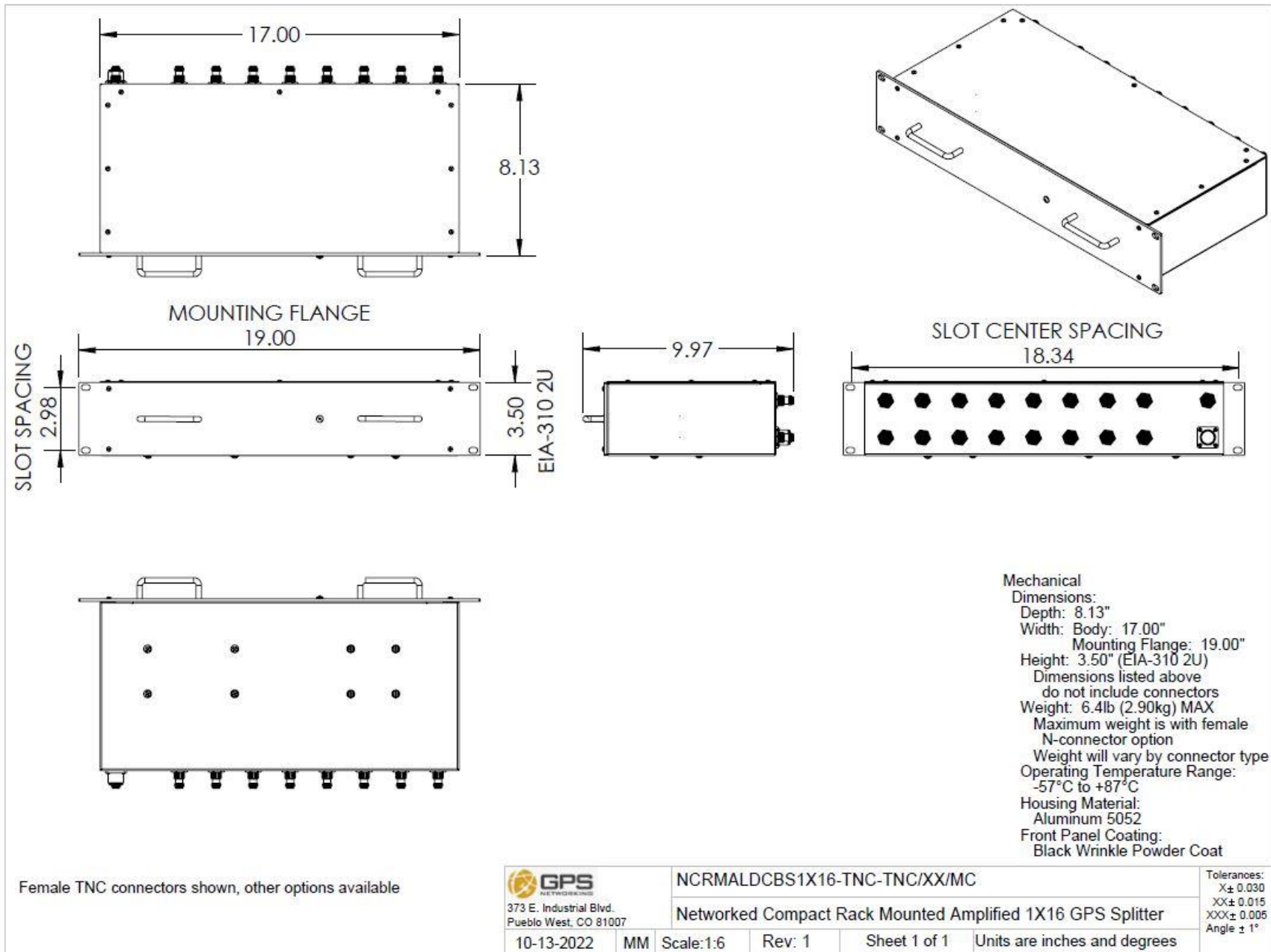
HICRMALDCBS1X16 (High Isolation Typical Gain)

Each HICRMALDCBS1X16 ships with a test sheet that verifies critical performance characteristics, such as gain, input VSWR, and amplitude balance; a typical VNA test sheet is shown below.

Test Data



Mechanical



Contact us at salestech@gpsnetworking.com for 3D models or CAD drawings.